

# Self-Led Resource Pack

## KS2

### How to use the pack?

- This resource pack is designed to support a school visit to the museum and enable pupils to respond to the exhibits and have fun at the same time.
- There are 8 activity stations in the museum, you will find numbers on the wall to indicate which activity area you are in.
- Activity Stations 1-5 are on the **Ground Floor**
- Activity Stations 6-8 are on the **Second Floor** (accessible via a flight of stairs at the front or back of the museum).
- If you are bringing a whole class (34max) the class **must** be split into small groups of 6-7 across all the activity stations you wish to use. All groups **must** be accompanied by a teacher/ adult helper at all times.
- Make sure you have printed activity sheets off in advance of your visit.

### Tips during your visit

- Familiarise yourself with the self-led pack before exploring displays. Introduce station areas by reading the introductory sentence out to the group.
- Allow pupils a little time to explore the activity station display cases before reading out the questions. Try to get pupils to stay in the area & complete activities before moving on. (We recommend 10 minutes per station).
- If you have any questions or queries during your visit do speak to staff or volunteers at the reception desk who should be able to help.
- Please note unfortunately we do not have any toilets at the Curtis Museum, however there are some located at The Allen Gallery (short walk from the museum).

### After your visit

- If pupils have not finished the worksheets these can be completed back at school.
- Talk to pupils about what they saw at the museum- what was their favourite object or display case?

## Curriculum Link?

The pack contains activities which are linked to the KS1/KS2 curriculum. The pack is designed to be used flexibly so that teachers pick activity stations which are most relevant or interesting for the pupils.

### Toys in the past:

History: changes within living memory

Science: everyday materials

Find activity stations: 1 & 6

### Fossils & Natural History:

Find activity stations:

2 & 7

### Early civilisations:

History: a local history study

Find activity stations:

3, 4 & 5

### Our Town in the past:

Find activity stations:

6 & 8



# Lower Floor Gallery

## Section 1: Toys

Look at the toys in the display cases, these were popular toys from the past. Many of the toys on display do not require batteries or electricity to make them work.

### Questions

What is your favourite toy or game to play at home?

What games do you play at school?

What material are these toys made from?

### Activity

Ask pupils to complete the **Old to New Toy Challenge** activity sheet. (One sheet per pupil)



### Did you know that...

The building you are in was built in 1880.



## Section 2: Fossils

This section of the museum shows us how the local landscape has been shaped over time.

Support pupils in looking at display cases and boards.

### Questions

What prehistoric animals can you see?

Can you find a large ammonite (it may look a bit like a snail shell)

### Activity

Ask pupils to complete the **Fossils - Myths and Legends** activity sheet located at the fossil table in section 2.



Please re-set the fossil tray after use, this will help the next activity group.

### Section 3: Stone Age, Bronze Age and Iron Age

Have a look at the cases on display, we can see lots of different materials used by people in the Stone Age, Bronze Age and Iron Age.

#### Questions

What types of materials can we see?  
(Clue: metal, flint, pottery)

What were they used for?

Do we still use any of these materials today?

#### Activity

Looking closely at the pottery we can see some patterns have been added. What patterns would you create if you were making your own pot?

Each pupil completes the **Decorate a Pot** activity sheet. **(One sheet per pupil)**



#### Did you know that.....

A battle took place in Alton in 1643 during the Civil War.



### Section 4: Romans

This area is full of objects that the Romans left behind which helps us to understand what life would have been like.

Take a look at the Roman display cases and see if you can find any Roman objects?

#### Questions

What everyday objects can we see?

Do we know what the Romans ate?

What type of jewellery did they wear?

#### Activity:

Ask pupils to locate the 'Lady on the tile'. Read aloud the information about the artefact & then ask pupils to complete the **The Lady on the Tile** activity sheet. **(One per pupil)**

**This activity could lead into further creative writing sessions back at school.**



## Section 5: Saxons

Take some time to study the Alton Buckle, this was once worn by a Saxon man and was found in his grave hundreds of years later by archaeologists.

### Questions

Who might have worn this?

Do you think they were important?

What material do you think it is made of?

### Activity

Ask pupils to complete the **Saxon Buckle** activity sheet. **(One per pupil)**



## Upper Floor Gallery

### Section 6: Dolls House

This dolls house gives us an idea of what a home would have looked like in the past. Although children could play with them, they had to take great care.

### Questions

Can you find the following items in either dolls house:

- **Shoes**
- **Iron**
- **Candlestick**
- **Pie**
- **Hot water bottle**
- **Bird in a cage**

### Activity

Ask the class to close their eyes and imagine they lived in a home similar to a dolls house.

What can they hear? What can they smell?  
What room are you in? What are you doing?



**Did you know that.....**

This museum explores 100 million years of history.



## Section 7: Natural History

This area of the museum shows us the different types of animals and insects which you might find in the local area.

### Activity:

What insects do you find in the following:

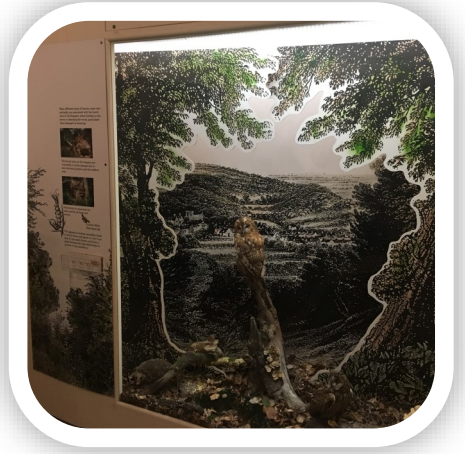
-Bogs

-Chalk grass land

-Heathland

-Beech trees

(Clue: pupils will need to read the display panels to work out the answers).



## Section 8: Our Town in the Past

This area of the museum shows us some of the key moments from the past in the local area.

### Activity 1:

Ask pupils to explore the displays and look at the photos on the wall. After a few minutes ask pupils to pick an object or photo which they found interesting.

- What did you like about the photo or object?
- Do you think it is old or new?
- Does it look different to what we see now?

### Activity 2: Alton 'Then' & 'Now' activity

Locate the display panel which shows us Alton high street in the past. Once located ask pupils to gather around it.

Next ask them to look at the **Alton Then** activity sheet and draw out comparisons using the prompt questions.

Then compare this with the **Alton Now** activity sheet, again prompting the class with questions.



**Did you know that.....**

The first map of Alton was made in 1666.